

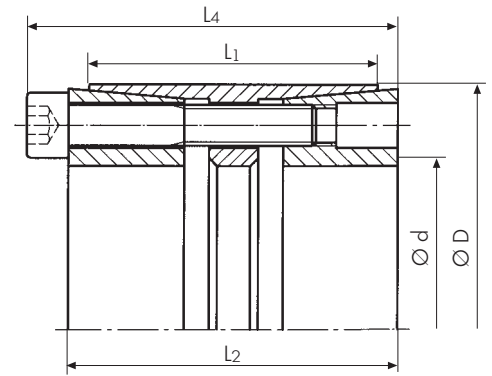
# Locking Assembly PSV 2005



## Advantages

- transmission of high torque values
- robust design

Shaft sizes up to 200 mm  
Torque up to 151.000 Nm



## Technical Data and Dimensions

Locking Assembly Dimensions					Transmissible Torque	Axial Force	Contact surface pressure between locking assembly and		Locking screws	Tightening torque of screws	Weight
Ø d	Ø D	L <sub>1</sub>	L <sub>2</sub>	L <sub>4</sub>			Shaft	Hub			
mm	mm	mm	mm	mm	T	F <sub>ax</sub>	p <sub>w</sub>	p <sub>N</sub>	DIN 912	T <sub>A</sub>	kg
					Nm	kN	N/mm <sup>2</sup>	N/mm <sup>2</sup>		Nm	
25	55	32	40	46	840	66	295	134	M6	17	0,5
28	55	32	40	46	940	66	264	134	M6	17	0,6
30	55	32	40	46	1.000	66	246	134	M6	17	0,6
35	60	44	54	60	1.360	78	174	101	M6	17	0,7
40	75	44	54	62	2.880	144	281	150	M8	41	0,8
45	75	44	54	62	3.240	144	250	150	M8	41	1,0
50	80	56	64	72	4.120	165	198	124	M8	41	1,4
55	85	56	64	72	5.090	185	203	131	M8	41	1,6
60	90	56	64	72	6.170	206	207	138	M8	41	1,7
65	95	56	64	72	6.690	206	191	131	M8	41	1,9
70	110	70	78	88	11.800	338	229	145	M10	83	3,1
75	115	70	78	88	12.700	338	213	139	M10	83	3,3
80	120	70	78	88	14.900	372	220	147	M10	83	3,5
85	125	70	78	88	15.800	372	207	141	M10	83	3,7
90	130	70	78	88	18.200	405	213	148	M10	83	3,8
95	135	70	78	88	19.300	405	202	142	M10	83	5,8
100	145	90	101	113	27.700	555	210	145	M12	145	6,1
110	155	90	101	113	33.300	605	209	148	M12	145	6,6
120	165	90	101	113	42.400	706	223	162	M12	145	7,2
140	190	104	116	130	67.400	963	217	160	M14	230	11,0
160	210	104	116	130	88.100	1.101	217	166	M14	230	12,0
180	235	134	148	164	127.000	1.416	190	145	M16	355	19,0
200	260	134	148	164	151.000	1.511	182	140	M16	355	22,0

Additional diameters available upon request. Technical Specifications subject to change without notice.

### Order data:

**24 x 55 PSV 2005**  
d x D Type

### Applications

- drives in mechanical presses
- shredders
- rock crushers
- similar applications with high torque requirements

### Technical Details

- self-centering
- tolerances H8/h8
- surface roughness  
R<sub>t</sub> max 16µm for shaft and hub