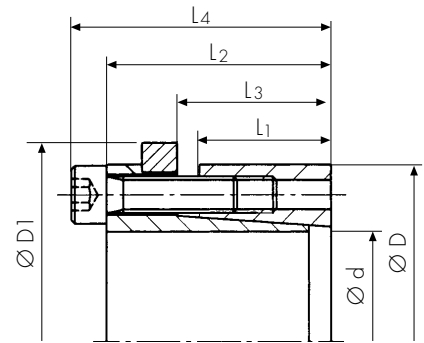




Advantages

- excellent usage of space
- no axial movement during installation

Shaft sizes up to 150 mm
Torque up to 30.100 Nm



Technical Data and Dimensions

Locking Assembly Dimensions							Trans-missible Torque T Nm	Axial Force F_{ax} kN	Contact surface pressure between locking assembly and		Locking screws G DIN 912	Tightening torque of screws T_A Nm	Weight kg
$\varnothing d$ mm	$\varnothing D$ mm	$\varnothing D1$ mm	L_1 mm	L_2 mm	L_3 mm	L_4 mm			Shaft P_w N/mm ²	Hub P_N N/mm ²			
20	47	56	26	39	31	45	310	31	230	95	M6	17	0,42
22	47	56	26	39	31	45	360	31	210	95	M6	17	0,40
24	50	59	26	39	31	45	420	35	210	100	M6	17	0,44
25	50	59	26	39	31	45	470	35	220	110	M6	17	0,43
28	55	64	26	39	31	45	580	41	200	110	M6	17	0,52
30	55	64	26	39	31	45	640	41	220	120	M6	17	0,49
32	60	69	26	39	31	45	780	50	200	110	M6	17	0,56
35	60	69	26	39	31	45	840	50	200	120	M6	17	0,55
38	65	74	26	39	31	45	1.000	50	200	120	M6	17	0,64
40	65	74	26	39	31	45	1.100	50	200	120	M6	17	0,61
42	75	84	30	47	36	55	1.900	90	220	140	M8	41	1,09
45	75	84	30	47	36	55	1.900	90	220	140	M8	41	1,00
48	80	89	30	47	36	55	2.100	90	220	140	M8	41	1,10
50	80	89	30	47	36	55	2.200	90	220	140	M8	41	1,07
55	85	94	30	47	36	55	2.400	90	220	140	M8	41	1,20
60	90	94	30	47	36	55	2.600	90	210	140	M8	41	1,29
65	95	104	30	47	36	55	2.800	90	200	130	M8	41	1,31
70	110	119	40	57	46	67	5.700	160	220	150	M10	83	2,44
75	115	124	40	62	46	72	6.200	160	220	140	M10	83	2,60
80	120	129	40	62	46	72	6.700	160	200	140	M10	83	2,73
85	125	134	40	62	46	72	8.000	180	220	160	M10	83	2,80
90	130	139	40	62	46	72	8.500	180	200	140	M10	83	2,99
95	135	144	40	62	46	72	10.000	180	190	140	M10	83	3,20
100	145	154	46	77	52	89	13.300	270	200	150	M12	145	4,14
110	155	164	46	77	52	89	14.600	270	200	180	M12	145	4,52
120	165	174	46	77	52	89	19.100	250	220	160	M12	145	4,84
130	180	189	46	77	52	89	20.400	300	200	140	M12	145	5,00
140	190	199	51	84	59	98	25.000	350	190	140	M14	230	10,50
150	200	209	51	84	59	98	30.100	350	200	150	M14	230	11,00

Additional diameters available upon request. Technical Specifications subject to change without notice.

Order data:

PSV 2007.3 20 x 47
 Type d x D

Applications

- sprockets and pulleys
- conveyor drums
- conveying equipment
- similar applications requiring a strong and economical connection

Technical Details:

- self-centering
- tolerances H8/h8
- surface roughness
 R_t max. 16 μ m shaft/hub