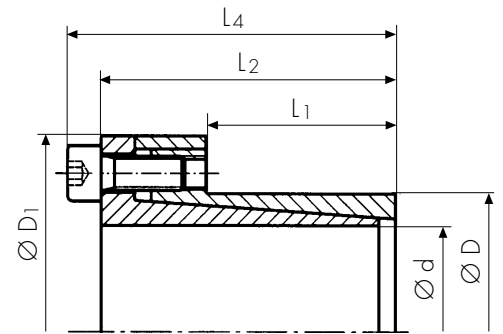




Advantages

- very small cross section
- limited contact surface pressure
- thin hubs with smaller outside diameters

**Shaft sizes up to 90 mm
Torque up to 8.300 Nm**



Technical Data and Dimensions

Locking Assembly Dimensions						Transmissible Torque T Nm	Axial Force F_{ax} kN	Contact surface pressure between locking assembly and		Locking screws G DIN 912	Tightening torque of screws T_A Nm	Weight kg
$\varnothing d$ mm	$\varnothing D$ mm	$\varnothing D1$ mm	L_1 mm	L_2 mm	L_4 mm			Shaft P_w N/mm ²	Hub P_N N/mm ²			
10	16	28	14	25,8	29,8	35	7	140	90	M4	5	0,12
11	18	32	14	26	30	50	10	167	102	M4	5	0,11
12	18	32	14	26	30	55	10	154	102	M4	5	0,14
14	23	39	14	26	30	65	10	140	80	M4	5	0,15
15	24	45	16	36	42	180	21	160	100	M6	17	0,15
16	24	45	16	36	42	180	21	210	140	M6	17	0,29
18	26	47	18	41	47	200	21	190	130	M6	17	0,32
19	27	49	18	41	47	210	21	210	170	M6	17	0,35
20	28	50	18	41	47	220	21	170	120	M6	17	0,35
22	32	54	25	48	54	230	21	100	70	M6	17	0,40
24	34	56	25	48	54	400	33	150	100	M6	17	0,40
25	34	56	25	48	54	420	33	150	100	M6	17	0,41
28	39	61	25	48	54	470	33	130	90	M6	17	0,50
30	41	62	25	48	54	500	33	120	90	M6	17	0,50
35	47	69	32	52	58	740	42	100	70	M6	17	0,60
38	50	72	32	52	58	800	42	100	70	M6	17	0,78
40	53	75	32	52	58	840	42	90	70	M6	17	0,80
45	59	86	45	72	80	1.700	75	100	80	M8	42	1,20
48	62	87	45	72	80	1.900	75	100	70	M8	42	1,40
50	65	92	45	72	80	1.940	75	90	70	M8	42	1,40
55	71	98	55	82	90	2.400	87	80	60	M8	42	1,80
60	77	104	55	82	90	2.600	87	70	60	M8	42	2,00
65	84	111	55	82	90	2.800	87	70	60	M8	42	2,30
70	90	119	65	97	107	4.800	137	80	60	M10	84	3,20
75	95	126	65	97	107	5.200	137	80	60	M10	84	3,50
80	100	131	65	97	107	7.400	185	100	80	M10	84	4,00
85	106	137	65	97	107	7.800	185	90	70	M10	84	4,20
90	112	144	65	97	107	8.300	185	80	70	M10	84	4,40

Additional diameters available upon request. Technical Specifications subject to change without notice.

Order data:

PSV 2010.1 20 x 28
Type d x D

Applications

- pulleys
- packaging machines
- textile machinery
- automation and handling equipment
- similar applications requiring transmission of high torque values and limited surface pressure

Technical Details:

- self-centering
- tolerances H8/h8
- surface roughness
 R_t max. 16 μ m shaft/hub