

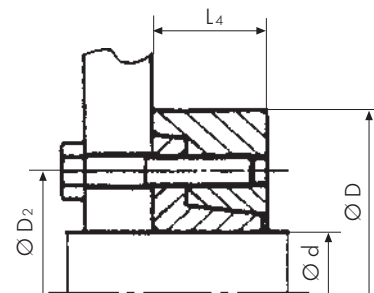
# Shrink Disc PSV 5023



## Advantages

- transmission of high torque values
- external locking solution
- excellent cyclic running capabilities

Shaft sizes up to 180 mm  
Torque up to 104.000 Nm



## Style A

Different styles available upon request

## Technical Data and Dimensions

Shrink Disc Dimensions					Transmissible Torque	Number of locking screws	Locking screws	Tightening torque of screws
Size mm	Ø d mm	Ø D <sub>2</sub> mm	Ø D mm	L <sub>4</sub> mm	T k Nm	#	G DIN 912	TA Nm
50	40				1.400			
	45	84	115	30	2.200	7	M12	100
	50				3.300			
60	50				2.300			
	55	94	120	34	3.500	9	M12	100
	60				4.700			
70	60				5.800			
	65	112	148	40	7.600	8	M16	240
	70				9.400			
80	70				8.000			
	75	130	170	44	10.000	9	M16	240
	80				12.000			
90	80				12.000			
	85	144	185	50	15.000	12	M16	240
	90				18.000			
100	90				16.000			
	95	156	197	54	19.000	14	M16	240
	100				23.000			
110	100				22.000			
	105	166	215	58	26.000	10	M20	470
	110				27.000			
120	110				33.000			
	115	186	230	65	38.000	14	M20	470
	120				43.000			
140	120				39.000			
	130	216	290	76	50.000	16	M20	470
	140				56.000			
160	140				64.000			
	150	234	320	83	77.000	14	M24	820
	160				77.000			
180	160				85.000			
	170	276	340	94	101.000	16	M24	820
	180				104.000			

Additional diameters available upon request. Technical Specifications subject to change without notice.

### Order data:

**60 x 50 PSV 5023-A**  
Size x d Type

## Applications

- press drives
- wind mills
- gearboxes
- conveyors
- similar applications involving hollow shafts and shafts

## Technical Details

- tolerance  $\varnothing d$  h9
- surface roughness  $R_t$  max 16µm for shaft and hub